



**BRINK & CAMPMAN**

home interiors

**Collection 2022**





**B & C**

design & craftsmanship since 1897



# Brink & Campman

At B&C we have been making rugs for almost 125 years. Rugs that are born out of a combination of passion, craftsmanship and sustainability. Our love for beautiful yarns and their endless possibilities motivates us each time to design and make the most unique and innovative rugs.

Besides the knowledge we have gained in the past century, we are constantly looking for innovation. We work with carefully selected producers from all over the world to develop new techniques and qualities. This collaboration ensures that we can continue to innovate and improve and is reflected in the versatile collection of rugs for which Brink & Campman is renowned.

We know better than anyone that every step in the process from raw wool to refined rug is of great importance.

That's why we look for the best applications and materials at every step.

The majority of our rugs are produced in our factory in Lichtenvoorde, the Netherlands, so we have a perfect view of the different processes that are so important to ensure the high-quality result we always envision.





# Yarns

A large proportion of the rugs in B&C's collection are made using yarns that we have developed ourselves over the years.

The development of these fibers enables us to make carpets in which the yarn rather than the design determines the appearance of the carpet.

Through our years of experience and constant development in this area, we can proudly say that we have developed materials that show the clear signature of B&C. We have developed yarns that get their unique look from the way they are dyed, felted or spun.

This development is an essential part of the design process, where a lot of attention is paid to the color, material thickness, material composition, etc. A minimal adjustment in one of these aspects can result in a maximum difference in the appearance of the rug that is eventually brought into the collection.







# Trace

axminster woven - pure new wool

total weight ca 5500 gr/m<sup>2</sup>

pile weight ca 4000 gr/m<sup>2</sup>

pile height ca 35 mm

available sizes:

140x200 cm 4'7" x 6'7"

170x240 cm 5'7" x 7'10"

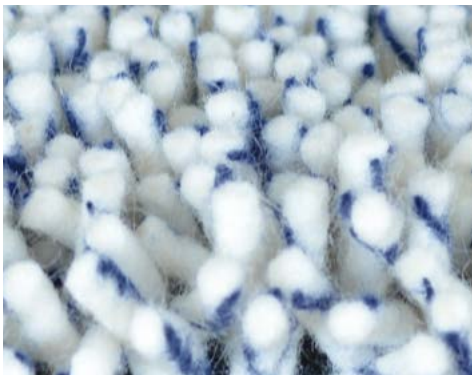
200x300 cm 6'7" x 9'8"

250x350 cm 8'2" x 11'6"

custom sizes on request



Trace mandarin orange | cut pile 120903



Trace midnight blue | cut pile 120908



Trace midnight blue | loop pile 121008



Trace mandarin orange | loop pile 121003



Trace olive green | cut pile 120917



Trace olive green | loop pile 121017



Trace turmeric yellow | cut pile 120906



Trace forest green | cut pile 120907



Trace forest green | loop pile 121007



Trace turmeric yellow | loop pile 121006 9

# Rocks

axminster woven - pure new wool

total weight ca 5500 gr/m<sup>2</sup>

pile weight ca 4000 gr/m<sup>2</sup>

pile height ca 20/50 mm

available sizes:

140x200 cm 4'7" x 6'7"

170x240 cm 5'7" x 7'10"

200x300 cm 6'7" x 9'8"

250x300 cm 8'2" x 9'8"

250x350 cm 8'2" x 11'6"

custom sizes on request



Rocks 70411



Rocks 70213



Rocks 70401



Rocks 70501



Rocks 70504



Rocks 70405



Rocks 70407



Rocks 70415





# Dots

axminster woven - pure new wool

total weight ca 4500 gr/m<sup>2</sup>

pile weight ca 3000 gr/m<sup>2</sup>

pile height ca 25/30 mm

available sizes:

140x200 cm 4'7" x 6'7"

170x240 cm 5'7" x 7'10"

200x300 cm 6'7" x 9'8"

250x350 cm 8'2" x 11'6"

custom sizes on request



Dots 170411



Dots 170213



Dots 170401



Dots 170501



Dots 170504



Dots 170405



Dots 170407



Dots 170415 13

# Pop Art

axminster woven - pure new wool

total weight ca 4000 gr/m<sup>2</sup>

pile weight ca 2600 gr/m<sup>2</sup>

pile height ca 15/40 mm

available sizes:

140x200 cm 4'7" x 6'7"

160x230 cm 5'3" x 7'6"

200x280 cm 6'7" x 9'2"

custom sizes on request



Pop Art 066904



Pop Art 066901



Pop Art 066907



Pop Art 066906



Pop Art 066902



Pop Art 066905







# Gravel

axminster woven - pure new wool

total weight ca 4400 gr/m<sup>2</sup>

pile weight ca 3000 gr/m<sup>2</sup>

pile height ca 35 mm

available sizes:

140x200 cm 4'7" x 6'7"

170x240 cm 5'7" x 7'10"

200x300 cm 6'7" x 9'8"

250x350 cm 8'2" x 11'6"

custom sizes on request



Gravel 68009



Gravel 68001



Gravel 68209



Gravel 68201



Gravel 68211 17





# Young

tufted - pure new wool  
total weight ca 3900 gr/m<sup>2</sup>  
pile weight ca 2500 gr/m<sup>2</sup>  
pile height ca 15/45 mm  
available sizes:  
140x200 cm 4'7" x 6'7"  
160x230 cm 5'3" x 7'6"  
200x280 cm 6'7" x 9'2"  
250x350 cm 8'2" x 11'6"  
custom sizes on request



Young 061804



Young 061801



Young 061805



Young 061807



Young 061806



Young 061802







# Quartz

axminster woven - pure new wool

total weight ca 3200 gr/m<sup>2</sup>

pile weight ca 1800 gr/m<sup>2</sup>

pile height ca 15/35 mm

available sizes:

140x200 cm 4'7" x 6'7"

170x240 cm 5'7" x 7'10"

200x300 cm 6'7" x 9'8"

custom sizes on request



Quartz 067104



Quartz 067101



Quartz 067105



Quartz 067118



Quartz 067108 23

# Spring

axminster woven - pure new wool

total weight ca 3900 gr/m<sup>2</sup>

pile weight ca 2500 gr/m<sup>2</sup>

pile height ca 15/45 mm

available sizes:

140x200 cm 4'7" x 6'7"

170x240 cm 5'7" x 7'10"

200x300 cm 6'7" x 9'8"

250x350 cm 8'2" x 11'6"

custom sizes on request



Spring 59107



Spring 59103



Spring 59101



Spring 59105





# Flamenco

tufted - pure new wool  
total weight ca 3600 gr/m<sup>2</sup>  
pile weight ca 2400 gr/m<sup>2</sup>  
pile height ca 15/40 mm  
available sizes:  
140x200 cm 4'7" x 6'7"  
160x230 cm 5'3" x 7'6"  
200x280 cm 6'7" x 9'2"  
250x350 cm 8'2" x 11'6"  
custom sizes on request



Flamenco 59004



Flamenco 59001



Flamenco 59005



Flamenco 59018



Flamenco 59017 27

# Arch

tufted - pure new wool  
total weight ca 4150 gr/m<sup>2</sup>  
pile weight ca 2800 gr/m<sup>2</sup>  
pile height ca 30 mm  
available sizes:  
140x200 cm 4'7" x 6'7"  
170x240 cm 5'7" x 7'10"  
200x280 cm 6'7" x 9'2"  
250x350 cm 8'2" x 11'6"  
custom sizes on request



Arch 067004



Arch 067001



Arch 067005



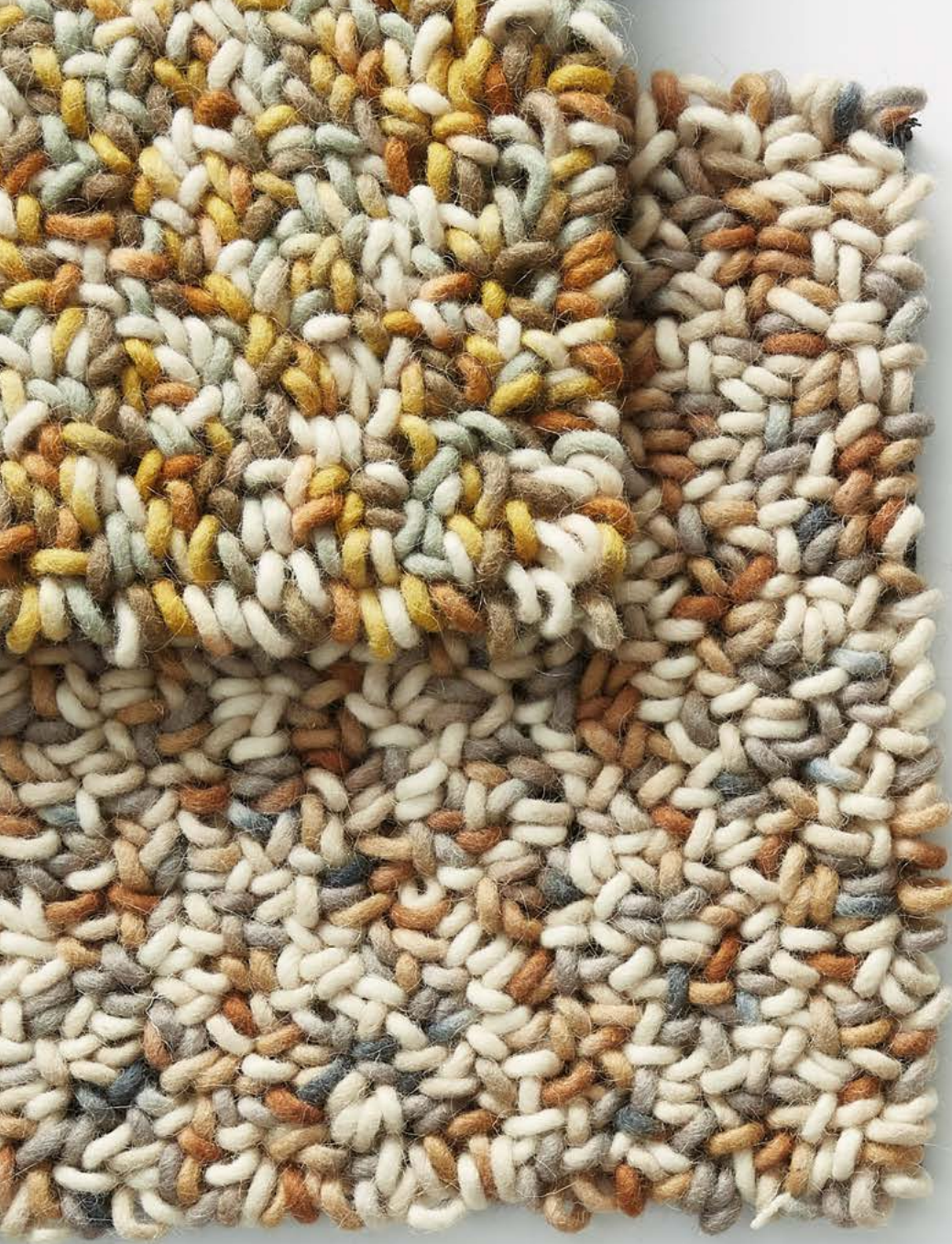
Arch 067007



Arch 067006



Arch 067002











# Twinset | Mural forest

tufted - pure new wool  
total weight ca 3500 gr/m<sup>2</sup>  
pile weight ca 2000 gr/m<sup>2</sup>  
pile height ca 17 mm  
available sizes:

140x240 cm 4'7" x 7'10"

160x280 cm 5'3" x 9'8"

200x350 cm 6'7" x 11'6"

250x440 cm 8'2" x 14'5"

Mural forest 121107







# Twinset | Mural burgundy

tufted - pure new wool  
total weight ca 3500 gr/m<sup>2</sup>  
pile weight ca 2000 gr/m<sup>2</sup>  
pile height ca 17 mm  
available sizes:

140x200 cm 4'7" x 6'7"  
170x240 cm 5'7" x 7'10"  
200x280 cm 6'7" x 9'2"  
250x350 cm 8'2" x 11'6"

Mural burgundy 121100

# Twinset | Mural cement

tufted - pure new wool  
total weight ca 3500 gr/m<sup>2</sup>  
pile weight ca 2000 gr/m<sup>2</sup>  
pile height ca 17 mm  
available sizes:  
140x200 cm 4'7" x 6'7"  
170x240 cm 5'7" x 7'10"  
200x280 cm 6'7" x 9'8"  
250x350 cm 8'2" x 11'6"

Mural cement 121104









# Twinset | Divina

tufted - pure new wool  
total weight ca 3700 gr/m<sup>2</sup>  
pile weight ca 2200 gr/m<sup>2</sup>  
pile height ca 17 mm  
available sizes:  
140x200 cm 4'7" x 6'7"  
170x240 cm 5'7" x 7'10"  
200x300 cm 6'7" x 9'8"  
250x350 cm 8'2" x 11'6"  
custom sizes on request



Twinset Divina 013401



Twinset Divina 013407 39

# Twinset | Urban

tufted - pure new wool/ Tencel™

total weight ca 3700 gr/m2

pile weight ca 2200 gr/m2

pile height ca 17 mm

available sizes:

140x200 cm 4'7" x 6'7"

170x240 cm 5'7" x 7'10"

200x300 cm 6'7" x 9'8"

250x350 cm 8'2" x 11'6"

custom sizes on request

custom colors are available

Twinset Urban 22101



Twinset cut 21504

Twinset loop 21404



Twinset cut 21501

Twinset loop 21401



Twinset cut 21506

Twinset loop 21406





# Twinset | Frame & Skyline

tufted - pure new wool/ Tencel™

total weight ca 3700 gr/m2

pile weight ca 2200 gr/m2

pile height ca 17 mm

available sizes:

140x200 cm 4'7" x 6'7"

170x240 cm 5'7" x 7'10"

200x300 cm 6'7" x 9'8"

250x350 cm 8'2" x 11'6"

custom sizes on request

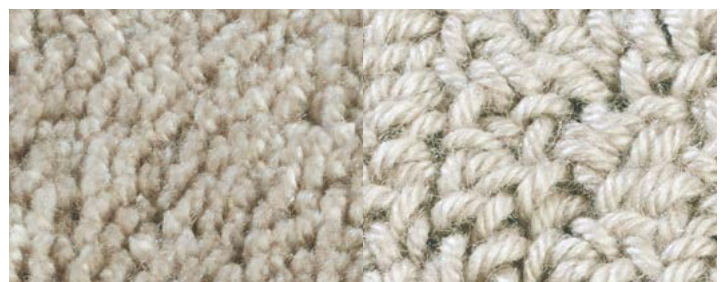


Twinset Frame 21206



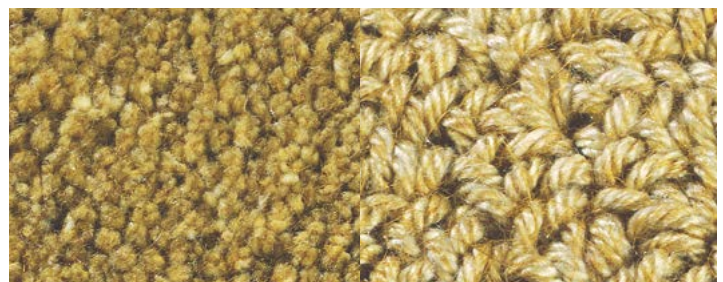
Twinset cut 21504

Twinset loop 21404



Twinset cut 21501

Twinset loop 21401



Twinset cut 21506

Twinset loop 21406



# Handmade

A large part of the B&C collection is handmade. We have rugs that are knotted, woven or tufted by hand in different parts of the world.

The handknotted carpets gain their quality and beautiful appearance through the use of traditional techniques in combination with the most beautiful yarns. The craftsmanship and the traditional way of working catch the eye and allow us to go a step further in the development of the designs.

In addition to the handknotted rugs, we have rugs that are woven by hand. These rugs are characterized by the technique of flat weaving. We are always looking for new techniques and possibilities within flat weaving. For example, we have developed a double-weave technique that makes it possible to use large open-weave structures in the designs.

Furthermore, we have handtufted rugs. This quality offers totally different possibilities. When tufting, for instance a loop pile or a cut pile can be chosen. These two can also be combined very well in different designs to achieve a very surprising result.

All of these techniques are mastered by our partners already for generations onwards. The love for these skills, materials and colors are visible in each and every rug.

# Pebble

handwoven - pure new wool  
total weight ca 4500 gr/m<sup>2</sup>  
pile weight ca 4200 gr/m<sup>2</sup>  
no pile due to flatweave structure  
available sizes:  
140x200 cm 4'7" x 6'7"  
170x240 cm 5'7" x 7'10"  
200x300 cm 6'7" x 9'8"  
250x350 cm 8'2" x 11'6"  
custom sizes on request



Pebble fresh green 129807



Pebble touch of orange 129803



Pebble natural sand 129811



Pebble beach beige 129801



Pebble cool grey 129804







# Tumble

handwoven – pure new wool  
total weight tumble ca 2400 gr/m2  
pile weight tumble ca 3700 gr/m2  
no pile due to flatweave structure  
available sizes:  
140x 200 cm 4'7" x 6'7"  
160x 230 cm 5'3" x 7'6"  
200x 280 cm 6'7" x 9'2"  
250x 350 cm 8'2" x 11'6"  
custom sizes are available



Tumble 013601



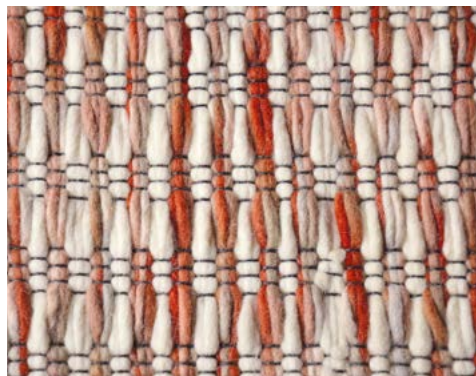
Tumble 013604

# Grain

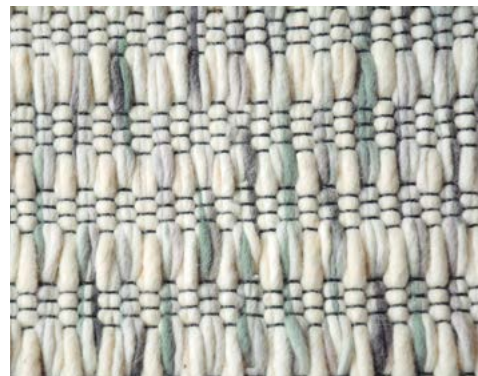
handwoven – pure new wool  
total weight grain ca 2200 gr/m<sup>2</sup>  
pile weight grain ca 4200 gr/m<sup>2</sup>  
no pile due to flatweave structure  
available sizes:  
140x 200 cm 4'7" x 6'7"  
160x 230 cm 5'3" x 7'6"  
200x 280 cm 6'7" x 9'2"  
250x 350 cm 8'2" x 11'6"  
custom sizes are available



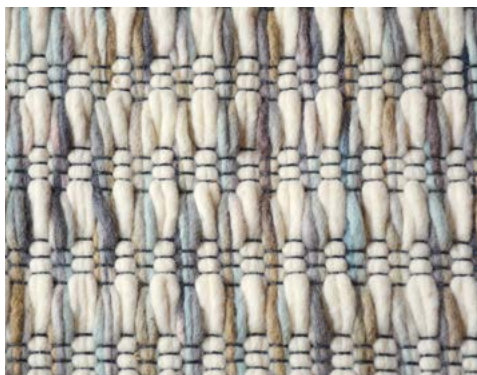
Grain 013501



Grain 013502



Grain 013504



Grain 013505



Grain 013506



Grain 013507





# Cobble

handwoven - pure new wool  
total weight ca 4000 gr/m<sup>2</sup>  
pile weight ca 3700 gr/m<sup>2</sup>  
no pile due to flatweave structure  
available sizes:  
140x200 cm 4'7" x 6'7"  
170x240 cm 5'7" x 7'10"  
200x300 cm 6'7" x 9'8"  
250x350 cm 8'2" x 11'6"  
custom sizes on request



Cobble 29201



Cobble 29204



Cobble 29206



Cobble 29207



Cobble 29208 53

# Marble

handwoven - pure new wool  
total weight ca 4500 gr/m<sup>2</sup>  
pile weight ca 4200 gr/m<sup>2</sup>  
no pile due to flatweave structure  
available sizes:  
140x200 cm 4'7" x 6'7"  
170x240 cm 5'7" x 7'10"  
200x300 cm 6'7" x 9'8"  
250x350 cm 8'2" x 11'6"  
custom sizes on request



Marble 29501



Marble 29503



Marble 29504



Marble 29505



Marble 29507



Marble 29517



Marble 29500







THE HISTORY OF THE  
CITY OF LONDON  
FROM THE FOUNDATION OF  
THE CITY BY THE  
ROMANS TO THE  
PRESENT TIME  
BY  
JOHN STOW  
1618

# Atelier

handwoven - pure new wool (design poule with viscose)

total weight ca 2500 gr/m<sup>2</sup>

pile weight ca 2000 gr/m<sup>2</sup>

no pile due to flatweave structure

available sizes:

140x200 cm 4'7" x 6'7"

160x230 cm 5'3" x 7'6"

200x280 cm 6'7" x 9'2"

250x350 cm 8'2" x 11'6"

custom sizes on request



Atelier coco 49903



Atelier poule 49805



Atelier twill 49201



Atelier twill 49206



Atelier twill 49207



Atelier craft 49506



Atelier craft 49502



Atelier craft 49508 57

# Design Studio

All Brink & Campman carpets are created in the design studio, which we proudly refer to as the heart of our company.

Our designers develop the unique collections, starting with a beautiful yarn, inspired by trends, or fascinated by the possibilities of a technique.

In the design process, we work with great passion and creativity, but we do not lose sight of craftsmanship, quality and sustainability.

We are convinced that only together, and in combination with our knowledge and expertise, can all these aspects lead to the high-quality rugs we love to make.

The fact that we bring a new collection every year gives us both the opportunity and the challenge to keep developing, renewing and improving.

An important aspect that we are still working on in the design studio and that we would like to develop even further is sustainability. The fact that we mostly work with natural materials such as wool is of course already an advantage but it is our goal to be on the lookout for opportunities to reduce our ecological footprint.



# Artisan | Focus dawn & dusk

handloom - pure new wool  
total weight ca 4000 gr/m<sup>2</sup>  
pile weight ca 2700 gr/m<sup>2</sup>  
no pile due to flatweave structure  
available sizes:

140x200 cm 4'7" x 6'7"

160x230 cm 5'3" x 7'6"

200x280 cm 6'7" x 9'2"

250x350 cm 8'2" x 11'6"

custom sizes on request









# Decor | Proof

handtufted - pure new wool & viscose

total weight ca 4500 gr/m<sup>2</sup>

pile weight ca 2500 gr/m<sup>2</sup>

pile height ca 12 mm

available sizes:

140x200 cm 4'7" x 6'7"

160x230 cm 5'3" x 7'6"

200x280 cm 6'7" x 9'2"

250x350 cm 8'2" x 11'6"

custom sizes on request

Proof 095907



# Decor | Lola

handtufted - pure new wool

total weight ca 4500 gr/m<sup>2</sup>

pile weight ca 2500 gr/m<sup>2</sup>

pile height ca 12 mm

available sizes:

140x200 cm 4'7" x 6'7"

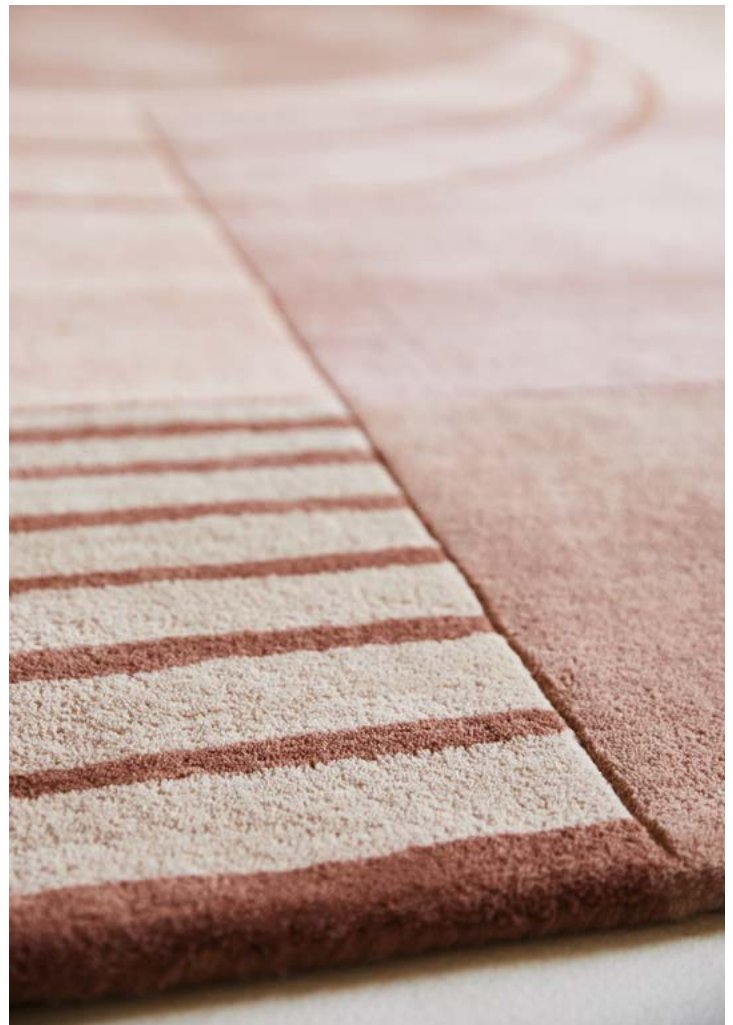
160x230 cm 5'3" x 7'6"

200x280 cm 6'7" x 9'2"

250x350 cm 8'2" x 11'6"

custom sizes on request

Lola 095403







# Decor | Scape

handtufted - pure new wool

total weight ca 4500 gr/m<sup>2</sup>

pile weight ca 2500 gr/m<sup>2</sup>

pile height ca 7-14 mm

available sizes:

140x200 cm 4'7" x 6'7"

160x230 cm 5'3" x 7'6"

200x280 cm 6'7" x 9'2"

250x350 cm 8'2" x 11'6"

custom sizes on request

Scape woolwhite 095001



# Decor | Miller spring & fall

handtufted - pure new wool

total weight ca 4500 gr/m<sup>2</sup>

pile weight ca 2500 gr/m<sup>2</sup>

pile height ca 12 mm

available sizes:

140x200 cm 4'7" x 6'7"

160x230 cm 5'3" x 7'6"

200x280 cm 6'7" x 9'2"

250x350 cm 8'2" x 11'6"

custom sizes on request

Miller spring 095108

Miller fall 095105









# Decor | Cosmo greens & red pale green

handtufted - pure new wool

total weight ca 4500 gr/m<sup>2</sup>

pile weight ca 2500 gr/m<sup>2</sup>

pile height ca 12 mm

available sizes:

140x200 cm 4'7" x 6'7"

160x230 cm 5'3" x 7'6"

200x280 cm 6'7" x 9'2"

250x350 cm 8'2" x 11'6"

custom sizes on request



# Decor | B&C Kids

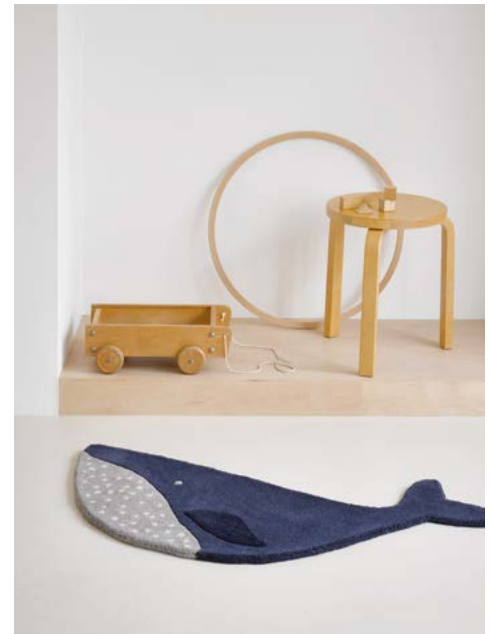
handtufted - pure new wool  
total weight ca 4500 gr/m<sup>2</sup>  
pile weight ca 2500 gr/m<sup>2</sup>  
pile height ca 12 mm



Bird 141201 | 90 x 80 cm



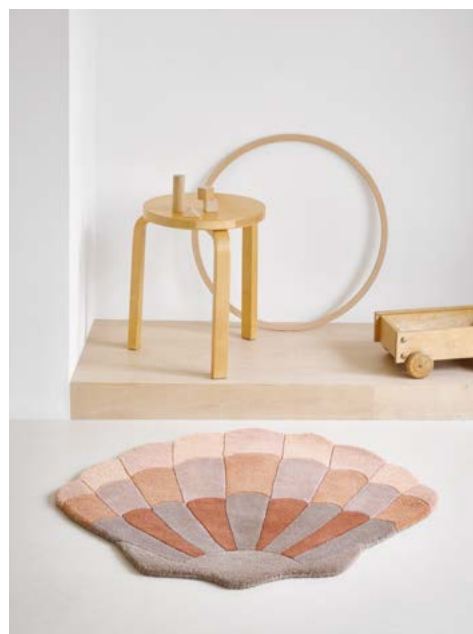
Lion 141403 | 80 cm round



Whale 141608 | 105 x 60 cm



72 Planet 141508 | 120 x 75 cm



Shell powder 141302 | 90 x 80 cm



Shell lilac 141308 | 90 x 80 cm









# Arabiska

handknotted - pure new wool  
total weight ca 4000 gr/m<sup>2</sup>  
pile weight ca 3000 gr/m<sup>2</sup>  
no pile due to flatweave structure  
available sizes:  
140x200 cm 4'7" x 6'7"  
170x230 cm 5'7" x 7'6"  
200x300 cm 6'7" x 9'8"  
250x350 cm 8'2" x 11'6"  
custom sizes on request



Arabiska diamant 063101



Arabiska moroccan 063401



Arabiska hexacon 063501



Arabiska geometrisk 063301



Arabiska geometrisk 063305



Arabiska marakesh 063201 77

# Yara | Nomad

handknotted | super 60 - pure new wool

total weight ca 3800 gr/m<sup>2</sup>

pile weight ca 3200 gr/m<sup>2</sup>

pile height ca 5 mm

available sizes:

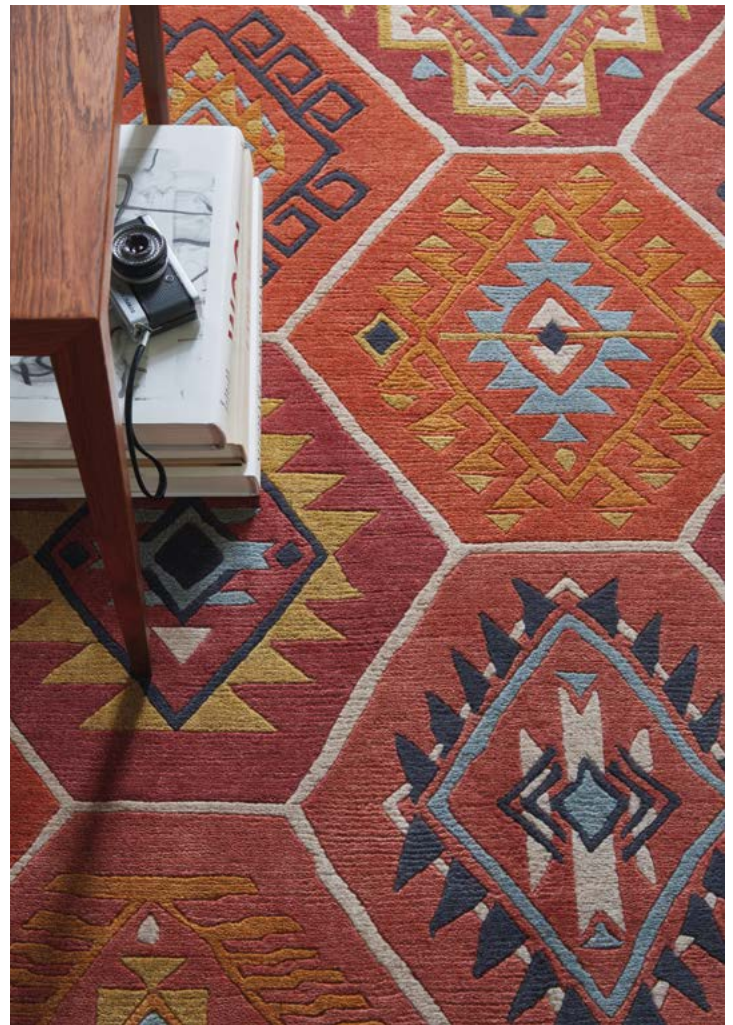
140x200 cm 4'7" x 6'7"

170x240 cm 5'7" x 7'10"

200x300 cm 6'7" x 9'8"

250x350 cm 8'2" x 11'6"

custom sizes on request









# Yara | Artdeco

handknotted | super 60 - pure new wool

total weight ca 3800 gr/m<sup>2</sup>

pile weight ca 3200 gr/m<sup>2</sup>

pile height ca 5 mm

available sizes:

140x200 cm 4'7" x 6'7"

170x240 cm 5'7" x 7'10"

200x300 cm 6'7" x 9'8"

250x350 cm 8'2" x 11'6"

custom sizes on request



# Yeti | Avalanche & Summit

handknotted | 60 knots - pure new wool & viscose

total weight ca 4000 gr/m<sup>2</sup>

pile weight ca 3400 gr/m<sup>2</sup>

pile height ca 9 mm

available sizes:

140x200 cm 4'7" x 6'7"

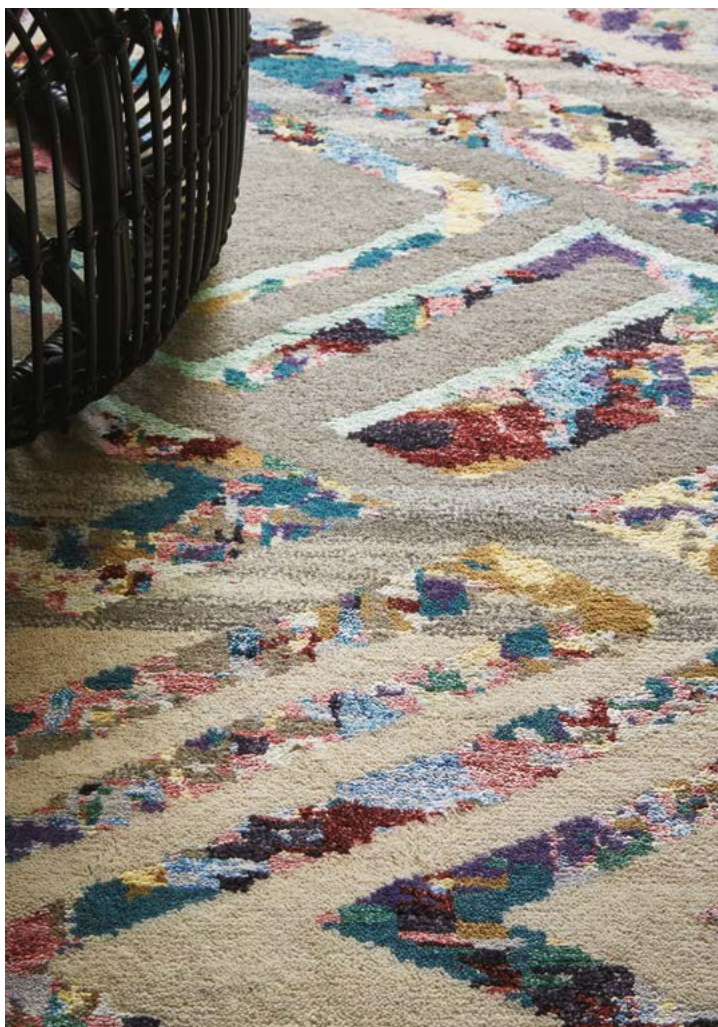
170x240 cm 5'7" x 7'10"

200x300 cm 6'7" x 9'8"

250x350 cm 8'2" x 11'6"

custom sizes on request

\* made out of recycled yarn scraps therefore  
colors may differ slightly







# Yeti | Anapurna

handknotted | 60 knots - pure new wool & viscose

total weight ca 4000 gr/m<sup>2</sup>

pile weight ca 3400 gr/m<sup>2</sup>

pile height ca 9 mm

available sizes:

140x200 cm 4'7" x 6'7"

170x240 cm 5'7" x 7'10"

200x300 cm 6'7" x 9'8"

250x350 cm 8'2" x 11'6"

custom sizes on request

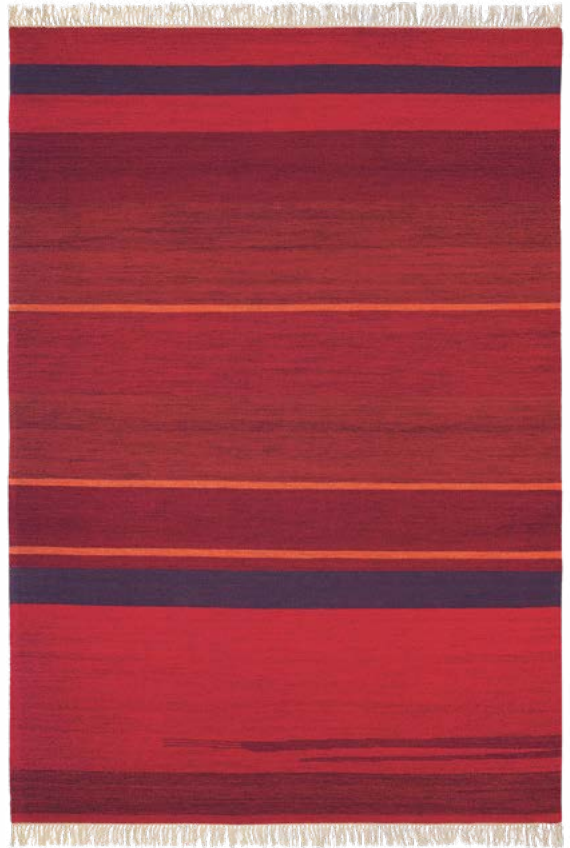
\* made out of recycled yarn scraps therefore  
colors may differ slightly



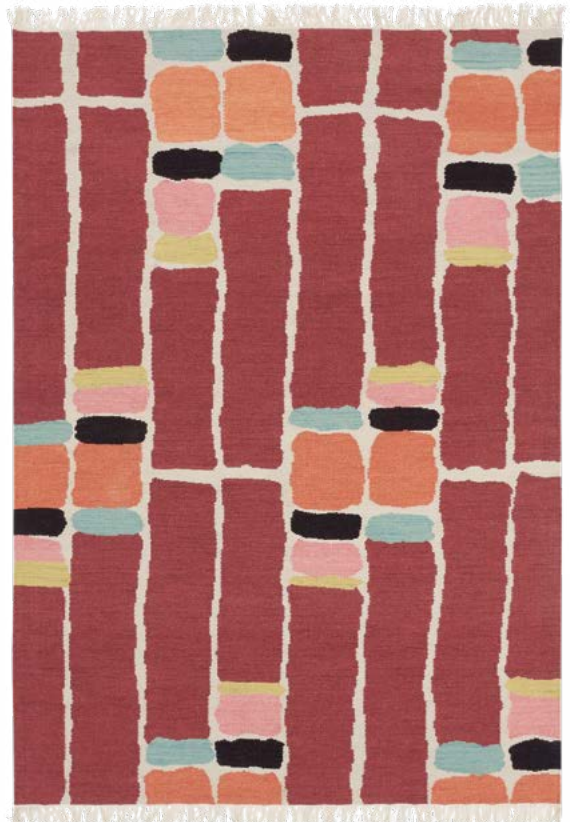
# Kashba

handwoven - pure new wool  
total weight ca 1400 gr/m<sup>2</sup>  
pile weight ca 1100 gr/m<sup>2</sup>  
no pile due to flatweave structure  
available sizes:

140x200 cm 4'7" x 6'7"  
160x230 cm 5'3" x 7'6"  
200x280 cm 6'7" x 9'2"  
100x300 cm 3'3" x 9'8"  
250x350 cm 8'2" x 11'6"



Delight 48100



Stack 048500



Stack 048507







# Kashba

handwoven - pure new wool  
total weight ca 1400 gr/m<sup>2</sup>  
pile weight ca 1100 gr/m<sup>2</sup>  
no pile due to flatweave structure  
available sizes:  
140x200 cm 4'7" x 6'7"  
160x230 cm 5'3" x 7'6"  
200x280 cm 6'7" x 9'2"  
250x350 cm 8'2" x 11'6"



Tipi 48907



Wigwam 048005



Wigwam 048007





4400  
laes goed! schijf duidelijk!  
Kleurno.: VP:  
17581 6987

1661  
Kleurcode  
Kleurno.: VP:  
laes goed! schijf duidelijk!  
17581 6987

laes goed! schijf duidelijk!  
Kleurno.: VP:  
17581 6987  
2010

# Estella

handtufted - pure new wool & viscose

total weight ca 4500 gr/m<sup>2</sup>

pile weight ca 2500 gr/m<sup>2</sup>

pile height ca 12 mm

available sizes:

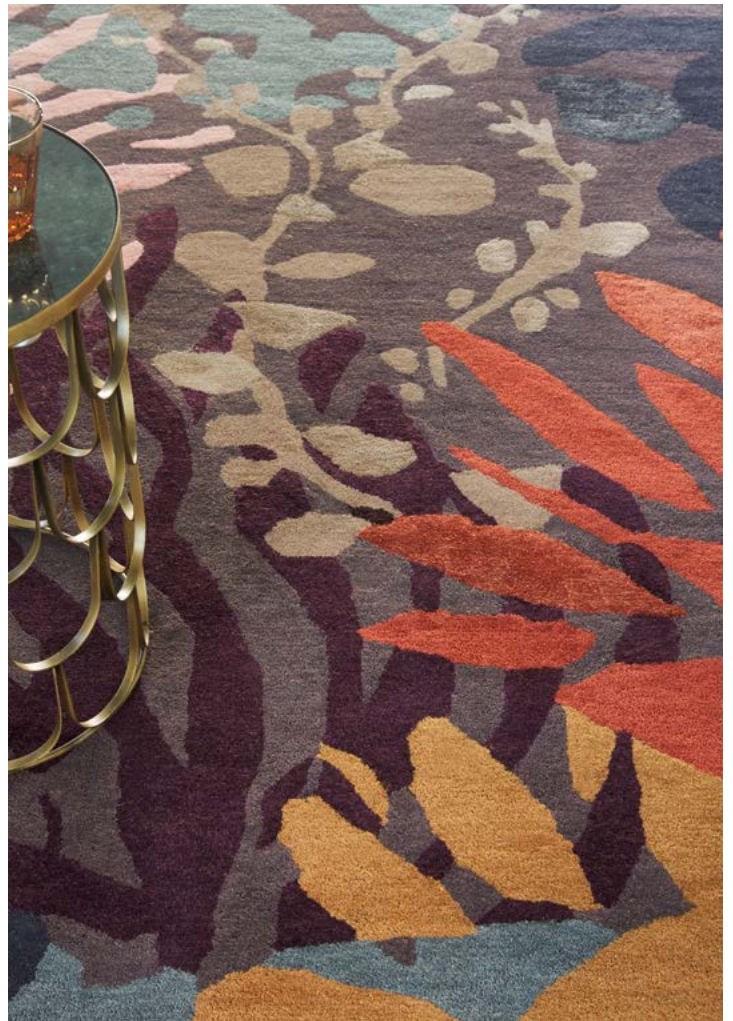
140x200 cm 4'7" x 6'7"

160x230 cm 5'3" x 7'6"

200x280 cm 6'7" x 9'2"

250x350 cm 8'2" x 11'6"

custom sizes on request









# Estella

handtufted - pure new wool  
total weight ca 4500 gr/m<sup>2</sup>  
pile weight ca 2500 gr/m<sup>2</sup>  
pile height ca 12 mm  
available sizes:  
140x200 cm 4'7" x 6'7"  
160x230 cm 5'3" x 7'6"  
200x280 cm 6'7" x 9'2"  
250x350 cm 8'2" x 11'6"  
custom sizes on request



Vases 089502



Domino 83901 95

# Estella

handtufted - pure new wool

total weight ca 4500 gr/m<sup>2</sup>

pile weight ca 2500 gr/m<sup>2</sup>

pile height ca 12 mm

available sizes:

140x200 cm 4'7" x 6'7"

160x230 cm 5'3" x 7'6"

200x280 cm 6'7" x 9'2"

250x350 cm 8'2" x 11'6"

custom sizes on request







# Estella

handtufted - pure new wool & viscose

total weight ca 4500 gr/m<sup>2</sup>

pile weight ca 2500 gr/m<sup>2</sup>

pile height ca 12 mm

available sizes:

140x200 cm 4'7" x 6'7"

160x230 cm 5'3" x 7'6"

200x280 cm 6'7" x 9'2"

250x350 cm 8'2" x 11'6"

custom sizes on request



# Estella

handtufted - pure new wool  
total weight ca 4500 gr/m<sup>2</sup>  
pile weight ca 2500 gr/m<sup>2</sup>  
pile height ca 12 mm  
available sizes:  
140x200 cm 4'7" x 6'7"  
160x230 cm 5'3" x 7'6"  
200x280 cm 6'7" x 9'2"  
250x350 cm 8'2" x 11'6"  
custom sizes on request



100 Moonlight 878305



Comic 875008



Drip 878104





# Brands

In addition to our own unique B&C collection, we develop and produce collections for worldwide renowned brands in the home interior and fashion world.

Our design studio works closely with the designers of these brands to ensure that together we can create highly recognizable collections. Each brand has its own distinctive style and goes through individual developments that keep us motivated to develop the most beautiful collections. The cooperation with these brands ensures that we can proudly offer a wide range of rugs where, just as with the B&C collection, quality and eye for detail are of great importance.



# Orla Kiely



Flower tomato  
061303



Flower sunshine  
061306



Flower forest  
061307



Cut Stem multi  
061405



Puzzle Flower slate  
060905



Giant sixties stem tomato  
060703



Cut stem dijon  
060806



Geo Flower graphite  
060605



Flower Stem granite  
059806



Giant multi  
061606



Multi stem  
061506

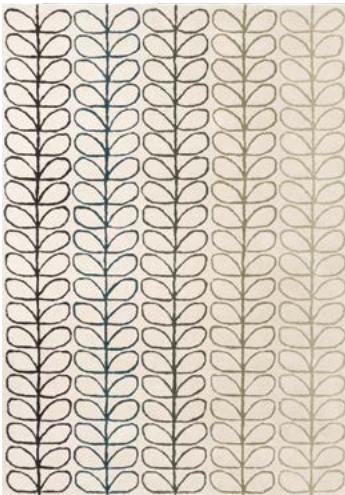
# Orla Kiely



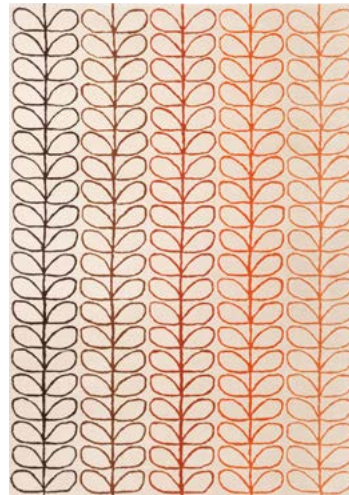
Optical flower dandelion  
061206



Optical flower teal  
061207



Linear Stem ombre basil  
061107



Linear stem ombre tomato  
061103



Sunflower Yellow  
060006



Sunflower Pink  
060005



Stem black  
059803



Yellow Stem  
059306



Giant Linear Stem  
059404



Giant Multi Stem  
059205



Classic Multi Stem  
059505



Multi Stem Kingfisher  
059507



Linear Stem Slate  
060505



Spot Flower Multi  
060404



# Morris & Co



Acanthus 126904  
Mole



Acanthus 126900  
Forest



Artichoke 127105  
Charcoal Mustard



Artichoke 127103  
Amber Charcoal



Artichoke 127108  
Mineral



Bullerswood 127308  
Indigo Red



Bullerswood 127301  
Stone Mustard



Bullerswood 127300  
Red Gold



Bullerswood 127305  
Charcoal Mustard



Wilhelmina 127401  
Linen Mustard



Wilhelmina 127400  
Russet



Snakeshead 127208  
Indigo



Snakeshead 127207  
Thistle Russet



Seaweed 127006  
Charcoal Mustard



Seaweed 127008  
Teal



Seaweed 28008  
Ink



Snakeshead 127200  
Chocolat Spice



Strawberry Thief 027700  
Crimson



Strawberry Thief 027708  
Indigo



Strawberry Thief 027718  
Slate



Pure Strawberry Thief  
028105 Ink



# Morris & Co



Pimpernel 028805  
Aubergine



Pimpernel 028808  
Bullrush



Pure Pimpernel 028701  
Linen



# Sanderson



Ishi 146004  
Slate | Charcoal



Ishi 146000  
Red | Charcoal



Cantaloupe 145204  
Pebble



Cantaloupe 145206  
Ochre



Cantaloupe 145203  
Burnt Orange



Grandiflora 145604  
Grey



Amanpuri 145101  
Stone



Amanpuri 145104  
Grey | Plum



Amanpuri 145103  
Russet



Grandiflora 145607  
Olive



Indra 145808  
Ink | Ruby



Indra 145804  
Charcoal



Anthea 47107  
China Blue



Rain Forest 060708  
Tropical Nights



Elsdon 44006  
Linden



Abstract 45401  
Linden | Silver



Stapleton Park 45318  
Navy | Burnt Orange



Stapleton Park 45302  
Rosewood



Dahlia & Rosehip 050608  
Teal



Rose & Peony 45005  
Cerise



Manila 46407  
Green



Poppies 45700  
Red | Orange

# Sanderson



# Harlequin



Elwana Slate  
140204



Elwana Jute  
140208



Diffinity Oyster  
140001



Diffinity Topaz  
140006



Elliptic Charcoal  
140304



Elliptic Emerald  
140307



Mehari Maize  
140101



Mehari Lime  
140107



Rosita Harissa  
140402



Rosita Putty  
140404





Typhonic Graphite  
140504



Typhonic Onyx  
140505



Rhythm Saffron  
40906



Bodega Stone  
040504



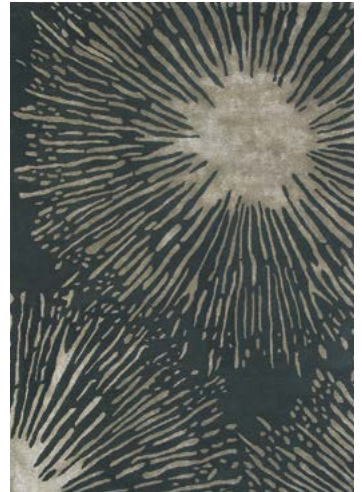
Arccos Ochre  
40205



Arccos Neptune  
40205



Shore Stone  
40601



Shore Truffle  
40605



Kelapa Blush  
040301



Kelapa Zest  
040307



Zeal Pewter  
43004



Zeal Berry  
43005



# Harlequin



Yasuni Ochre  
040404



Yasuni Cerise  
040405



Floresale Maize  
44906



Floresale Fuschia  
44905



Quintessence Heather  
41801



Lulu Pebble  
44601



# Scion



Padukka Twilight  
023208



Composition Amber  
023701



Composition Papaya  
023706



Parwa Chalky Brights  
026300



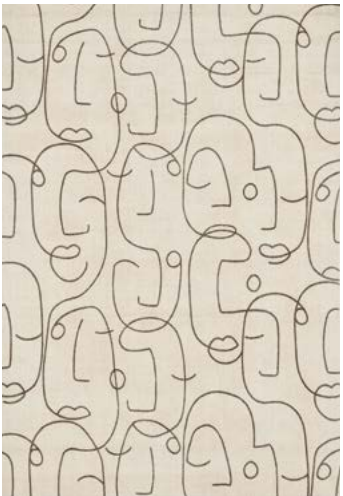
Parwa round Chalky Brights  
026300



Parwa Dusky Hues  
026308



Parwa round Dusky Hues  
026308



Epsilon Charcoal  
023801



Epsilon Honey  
023806



Epsilon teal  
023808



Oxalis Juniper  
025507



Esala Gelato  
026501



Esala Tropicana  
026505



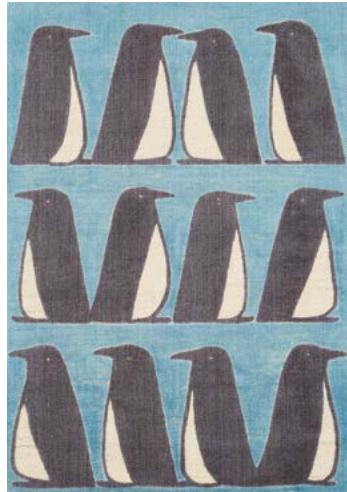
Uteki Slate  
023604



Uteki Sunflower  
023606



Pedro Dandelion  
023406



Pedro Marine  
023408



Lintu Pacific  
24408



Lintu Dandelion  
24405



Kelda Taupe  
023504



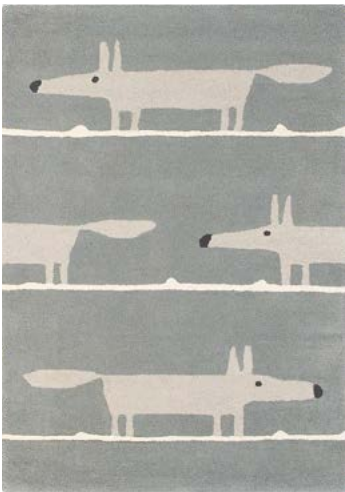
Kelda Honey  
023506



Kelda Cobalt  
023508



Spike Marine  
26808



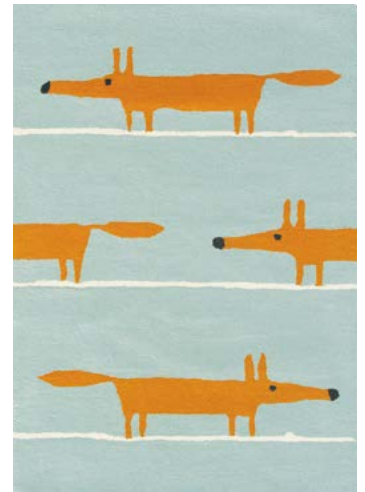
Mr Fox Silver  
25304



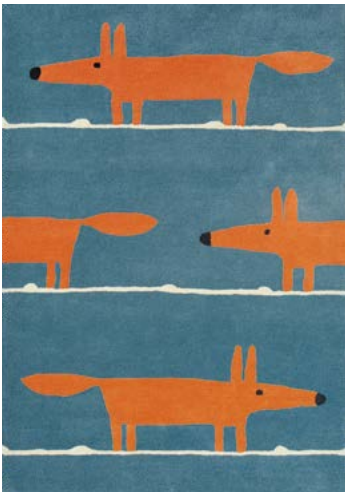
Mr Fox Cinnamon  
25303



Mr Fox Mustard  
25306



Mr Fox Aqua  
25308



Mr Fox Denim  
25318



Raita Taupe  
24701



Lohko Honey  
25806



Kaleido Pop  
26000



Pajaro Steel  
23904



Pajaro Ochre  
23906

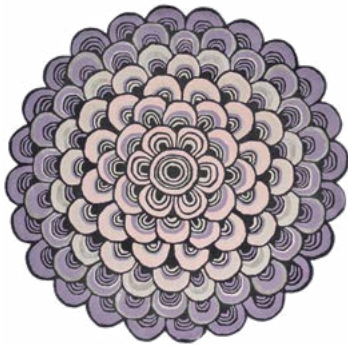


Viso Denim  
24008



Viso Paprika  
24003

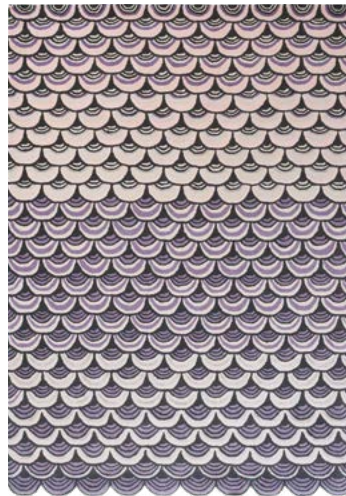
# Ted Baker



Masquerade round pink  
160002



Masquerade round blue  
160008



Masquerade pink  
160002



Masquerade blue  
160008



Emerging Lobster green  
160407



Emerging Fish burgundy  
160500



Ivory Atlas ochre  
160205



Ivory Atlas round  
160205



Zakouma ochre  
160606



Zakouma light blue  
160608



Saffron red  
160800



Saffron pink  
160802





Zodiac Aries  
161105



Zodiac Taurus  
161205



Zodiac Gemini  
161305



Zodiac Cancer  
161405



Zodiac Leo  
161505



Zodiac Virgo  
161605



Zodiac Libra  
161705



Zodiac Scorpio  
161805



Zodiac Sagittarius  
161905



Zodiac Capricorn  
162005



Zodiac Aquarius  
162105



Zodiac Pisces  
162205



Ivory pink  
160702



Jardin pink  
160902



Jardin blue  
160908



Plaid grey  
057804



Tranquility beige  
56001



Tranquility aubergine  
56005



Tranquility round beige  
56001



Tranquility round aubergine  
56005





Sahara pink  
56102



Sahara burgundy  
56105



Sahara round pink  
56102



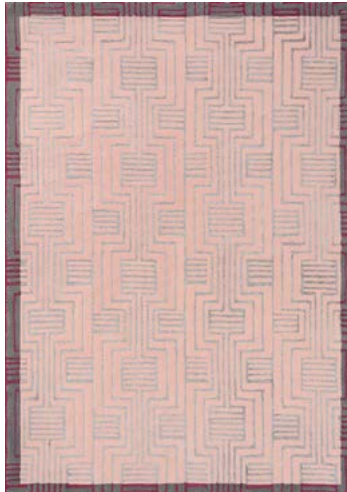
Sahara round burgundy  
56105



Mosaic light purple  
057605



Mosaic deep purple  
057607



Kinmo pink  
056802



Kinmo green  
056807



Opal grey  
53704



Woodland  
53507



Vanilla Pale Blue  
53908

# Wedgwood Home



Folia round stone  
38301



Folia round grey  
38305



Folia round navy  
38308



Hummingbird blue  
37808



Folia stone  
38301



Folia grey  
38305



Folia navy  
38308



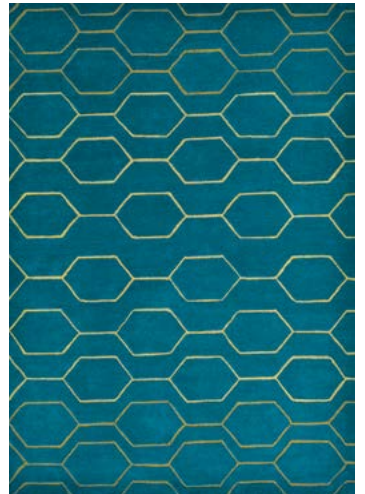
Arris cream  
37309



Arris grey  
37304



Arris pink  
37302



Arris teal  
37307



Wild Strawberry tonal  
38201



Wild Strawberry cream  
38108



Wild Strawberry navy  
38118



Paeonia coral  
37902



Tonquin cream  
37009



Tonquin blue  
37008



Tonquin charcoal  
37005



Paeonia taupe  
37904



Fabled Floral grey  
37504



Fabled Floral navy  
37508



Intaglio grey  
37201



Intaglio black  
37205

# Florence Broadhurst



Tortoiseshell Stripe Jade  
039808



Japanese Bamboo Jade  
039507



Turnabouts Black  
039205



Turnabouts Claret  
039200



Japanese Fans Ivory  
039301



Japanese Fans Gold  
039305



Floral 300 Charcoal  
039604



Floral 300 Poppy  
039600



Japanese Floral Oyster  
039701



Japanese Floral Midnight  
039708



Waterwave Stripe Citron  
039906



Waterwave Stripe Pearl  
039908



Slub Mist  
039401



Slub Charcoal  
039405

# BlueBellGray



Palais  
18408



Tetbury Meadow  
19201



Ines Jardin  
19904



Jungle  
18307



Kippen  
18705



Amal  
19707



Atlas  
19808



Muralla Azure  
015108



Pedro  
015402



Rothesay  
015707



Sanna  
015902



Zinnia  
016505



Blue Skies  
013708

# BRINK & CAMPMAN

home interiors

Albert Schweitzerstraat 3  
7131 PG Lichtenvoorde | the Netherlands  
tel +31 (0)544 390 400  
brinkandcampman.com  
info@brinkandcampman.com



## Sales offices

the Netherlands:	tel + 31 (0)544 390 431
Europe:	tel + 31 (0)544 390 429
Germany, Austria, Switzerland:	tel + 31 (0)544 390 430
Americas, Asia, Africa, Oceania:	tel + 31 (0)544 390 428

## The Netherlands

Robert Apeldoorn  
m +31 (0)6 101 329 64  
rapeldoorn@brinkandcampman.com

## Export

Jasper Kempers  
m +31 (0)6 128 157 72  
jkempers@brinkandcampman.com

We have partners in the following countries:

Australia	Greece	Portugal
Austria	Hong Kong	Romania
Azerbaijan	Hungary	Russia
Belgium	Ireland	Serbia
Bolivia	Italy	Singapore
Brazil	Japan	Slovakia
Bulgaria	Kazakhstan	South Africa
Canada	Korea	South-East Asia
China	Kuwait	Spain
Colombia	Latvia	Sweden
Czech Republic	Lithuania	Switzerland
Denmark	Malta	Ukraine
Estonia	Mexico	United Kingdom
France	New Zealand	USA
Finland	Norway	
Germany	Poland	













**B&C**

Albert Schweitzerstraat 3  
7131 PG Lichtenvoorde | the Netherlands  
tel +31 (0)544 390 400  
brinkandcampman.com  
info@brinkandcampman.com

